



Innovative Medicines Initiative (IMI) Future funding opportunities

Catherine Brett, IMI

Conferencia H2020 y Salud | Madrid, Spain | 8 November 2017

Outline

What is IMI and why do we need it?

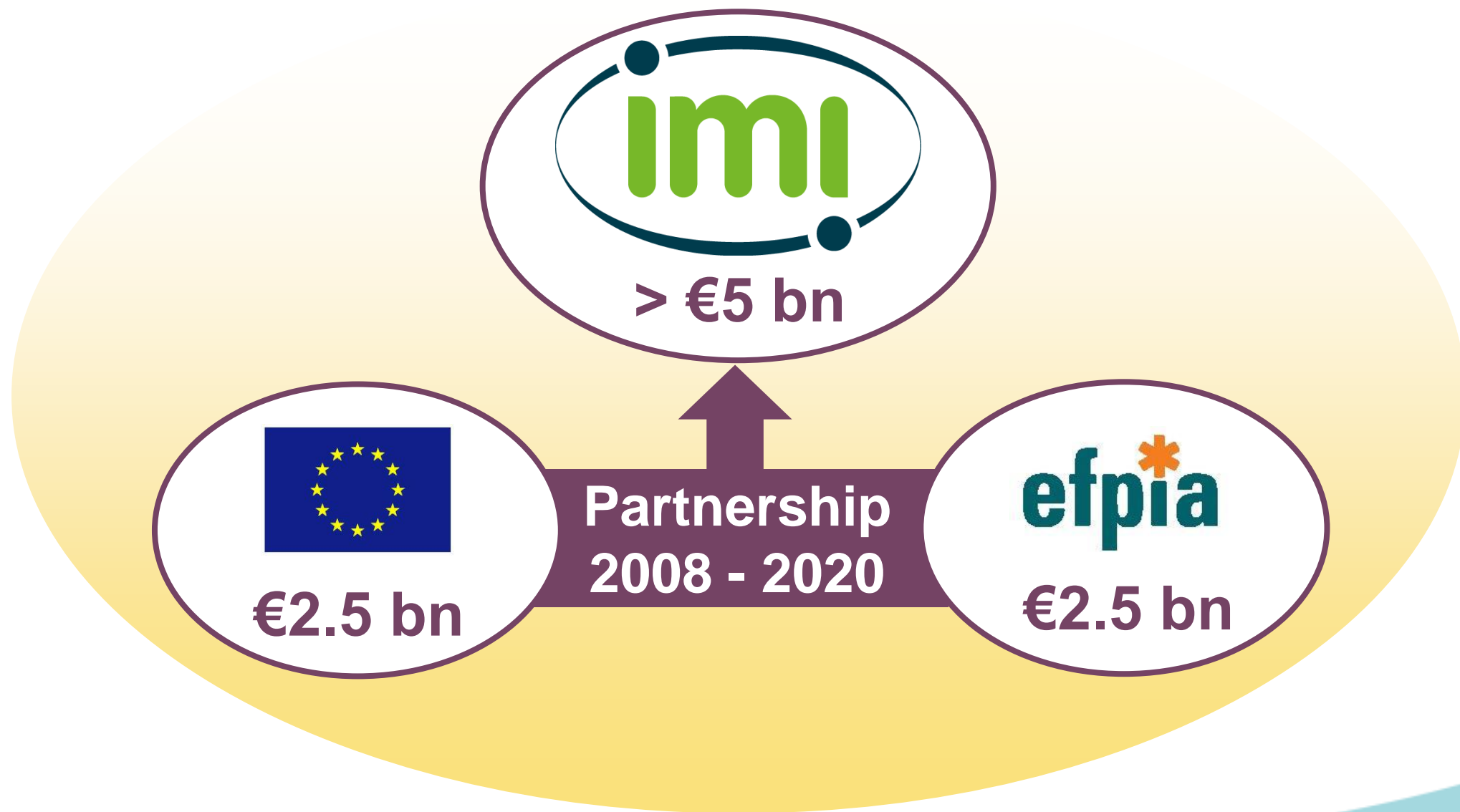
How does IMI work?

What's in it for me?

Current / future funding opportunities

What is IMI and why do we need it?

IMI – Europe's partnership for health



Why do we need IMI?

Because drug development is very...

risky

inefficient

complex

time
consuming

expensive

Because...

Not enough
science
throughout
development

Clinical trial
designs not
always optimal

Regulatory
pathways not
always optimised

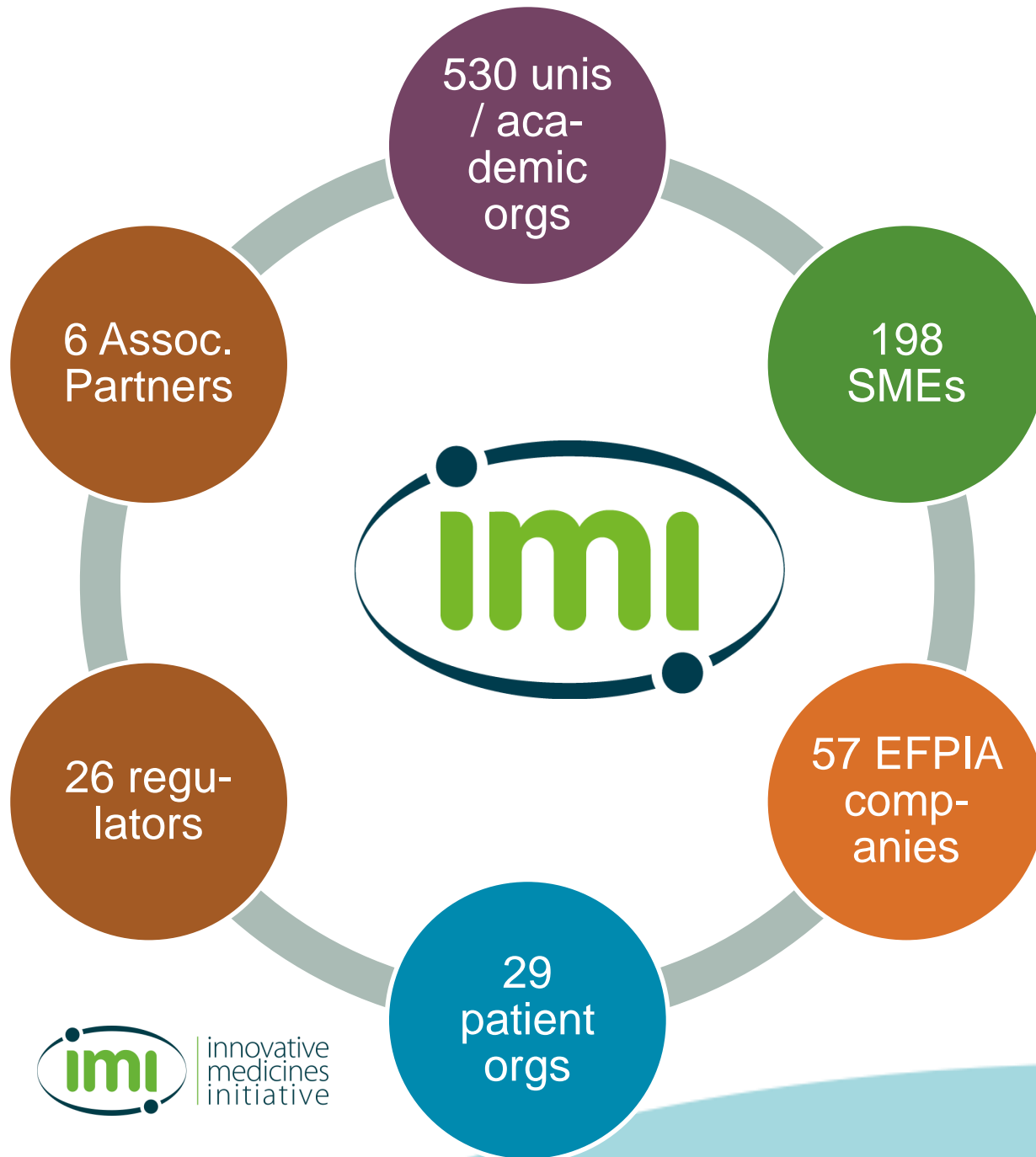
How is IMI addressing the challenges in drug development?

Through IMI's projects we are trying to...

- **put patients at the centre**
- **share risk** (among public & private players)
- **increase efficiency** (by developing common tools)
- **reduce duplication of effort** (esp. at early stages)
- **reduce timelines** (by using a personalised medicine approach)
- **integrate the latest science** into drug development
- **use data and knowledge management** to work more effectively

We do this by creating a **neutral platform** where **all involved** in drug development – academics, industry, SMEs, patients, regulators, others – can engage in **open collaboration** on **shared challenges**.

An international, cross-sector community



Over 11 500 researchers working for:

- open collaboration
- improved R&D productivity
- innovative approaches to unmet medical needs



How does IMI work?

Goals of IMI2 programme

- ✓ **Improve the drug development process** by creating tools to assess the efficacy, safety and quality of medicines
- ✓ **Develop new biological markers to diagnose diseases and assess treatments**
- ✓ **Speed up the earlier stages** of drug development
- ✓ **Increase the success rate of clinical trials** of new medicines & vaccines
- ✓ **Develop new therapies** for certain diseases

Official Journal of the European Union

COUNCIL REGULATION (EU) No 557/2014

of 6 May 2014

establishing the Innovative Medicines Initiative 2 Joint Undertaking

(Text with EEA relevance)

IMI 2 Strategic Research Agenda

- Antimicrobial resistance
- Osteoarthritis
- Cardiovascular diseases
- Diabetes
- Neurodegenerative diseases
- Psychiatric diseases
- Respiratory diseases
- Immune-mediated diseases
- Ageing-associated diseases
- Cancer
- Rare/Orphan Diseases
- Vaccines



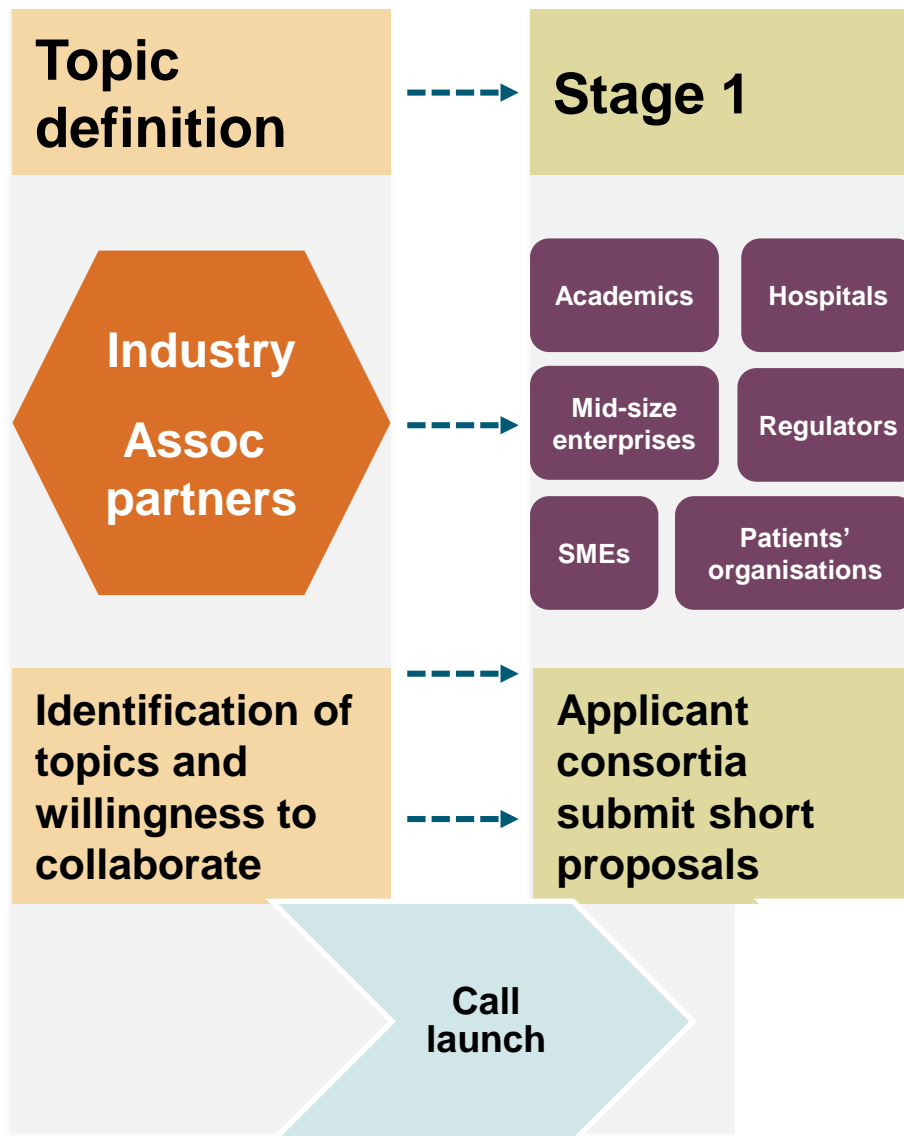
The right prevention and treatment
for the right patient at the right time
Strategic Research Agenda for
Innovative Medicines Initiative 2

**Aligned with
WHO priorities**

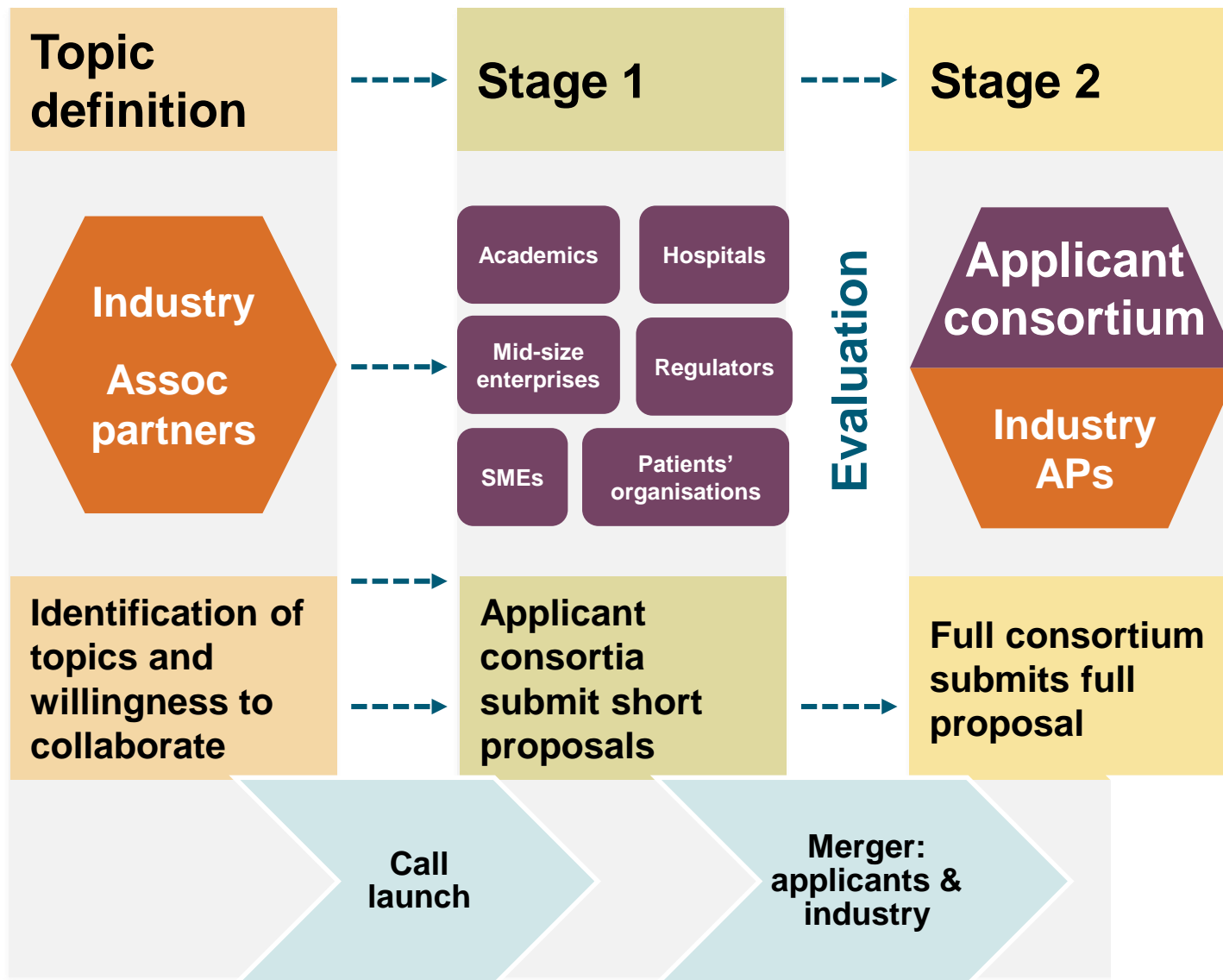
Typical IMI project life cycle



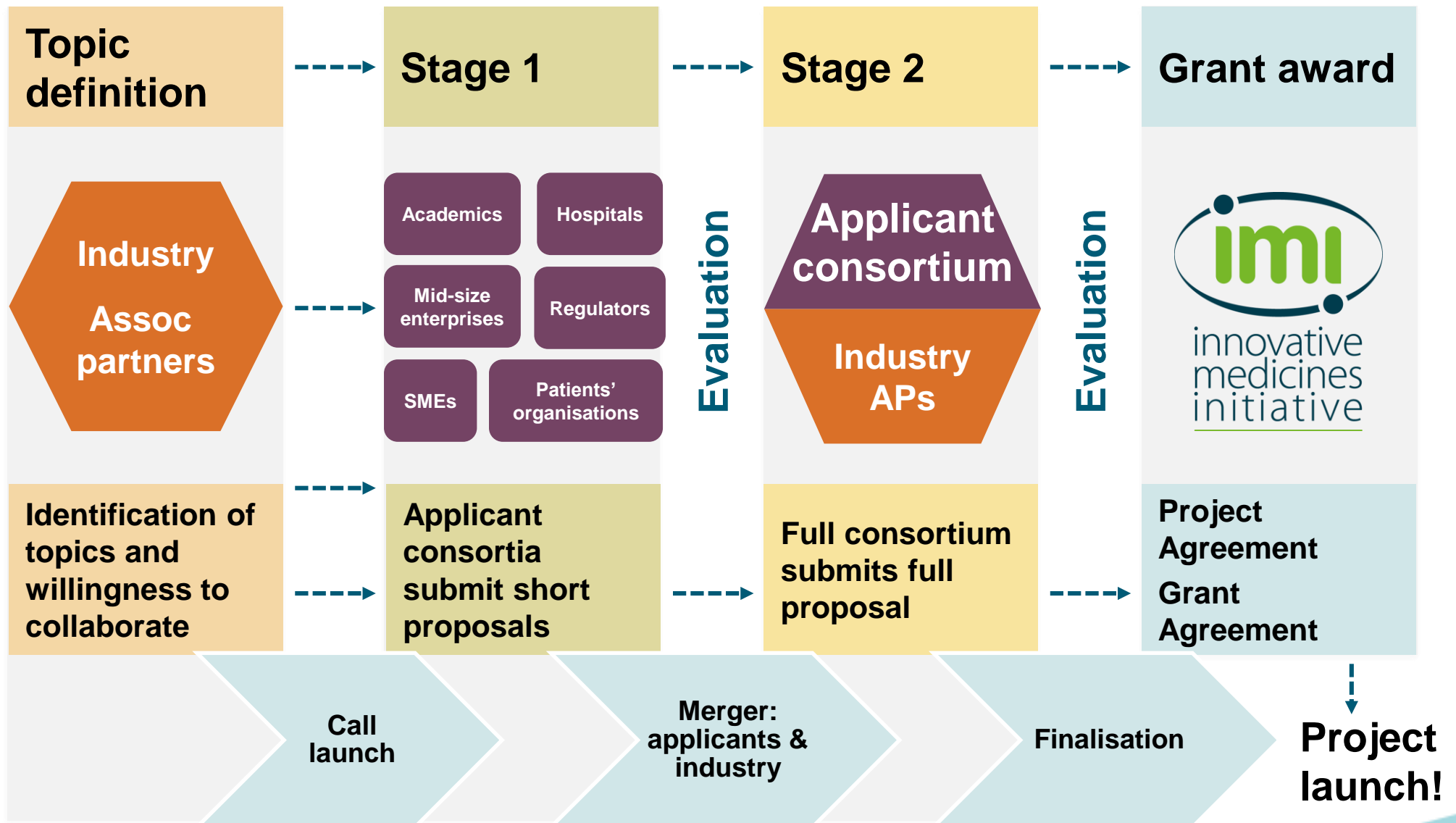
Typical IMI project life cycle



Typical IMI project life cycle



Typical IMI project life cycle



What's in it for me?

Benefits of participating in IMI projects include...

- Form new networks and partnerships with top teams from industry, academia, SMEs, patients and regulators
- Build reputation and visibility. IMI research has a citation impact of 2.03 - nearly twice the EU average
- Access to infrastructure, technology and resources
- Learn about industry standards
- Learn new ways of working from project partners
- Access to funding

Current / future funding opportunities

IMI 2 – Call 8

Open Call on Ebola & related diseases

Call launched December 2015, will remain open for two years.

- Opportunity to capture emerging scientific advances and progress those rapidly into healthcare interventions.
- Deliverables of projects funded must increase our preparedness to react to future outbreaks of Ebola and other filoviral haemorrhagic fevers.
- Projects can address vaccines, diagnostics, treatments, etc.
- Indicative IMI budget: **€55 million** (remaining)
- Cut-off dates: ~~16 March 2016, 15 September 2016,~~
~~16 March 2017, 14 September 2017,~~ **15 March 2018.**

IMI2 – Call 13: Indicative topics

- Assessment of the uniqueness of **diabetic cardiomyopathy** relative to other forms of heart failure using unbiased phenomapping approaches
- Genome-environment interactions in **inflammatory skin disease**
- The value of **diagnostics** to combat **antimicrobial resistance** by optimising antibiotic use
- **Mitochondrial** dysfunction in **neurodegeneration**
- **Support and coordination action** for the projects of the **neurodegeneration** area of the Innovative Medicines Initiative
- A sustainable European **induced pluripotent stem cell platform**
- Linking **digital assessment of mobility** to clinical endpoints to drive regulatory acceptance and clinical practice
- Human **tumour** microenvironment **immunoprofiling**

IMI2 – Call 13: Indicative topics

- **CONCEPTION** – continuum of evidence from **pregnancy** exposures, reproductive toxicology and **breastfeeding** to improve outcomes now
- Improving the **preclinical prediction of adverse effects** of pharmaceuticals on the **nervous system**
- **Translational safety biomarker pipeline (TRANSBIOLINE)**: enabling development and implementation of novel safety biomarkers in clinical trials and diagnosis of disease
- Federated and privacy-preserving **machine learning** in support of drug discovery

Pilot programme on a clinical compound bank for repurposing

- **4 topics**: cardiovascular diseases and diabetes; respiratory diseases; neurodegenerative diseases; rare/orphan diseases

Tips for applicants

- Start working early
- Get informed
- Find partners
- Read and understand the Call documents
- Ask questions
- Make sure you address the requirements of the topic
- Don't forget to address any ethical issues
- Don't forget the basics (eligibility criteria, deadlines, format)
- The evaluators aren't psychic

Good luck!

Stay in touch

- Visit our new website www.imi.europa.eu
- Sign up to our newsletter [via the website](#)
- Follow us on Twitter [@IMI_JU](https://twitter.com/IMI_JU)
- Join our LinkedIn group bit.ly/LinkedInIMI
- E-mail us infodesk@imi.europa.eu



The screenshot shows the IMI website homepage. At the top left is the IMI logo (innovative medicines initiative). To the right is the tagline "Europe's partnership for health". Below this is a navigation bar with links: Home, About IMI, Get involved, Apply for funding, Projects & results, News & events, and Reference documents. The main content area features a large image of a petri dish with colorful bacterial colonies. A text box overlaid on the image reads: "We are an EU public-private partnership funding health research and innovation". At the bottom, a teal bar displays key statistics: €5.3bn BUDGET, 90 PROJECTS, 864 PARTICIPANTS, 6 995 PROJECT OUTPUTS, and 2 686 PUBLICATIONS.

The screenshot shows the IMI Twitter profile page. The profile picture is the IMI logo. The bio reads: "The Innovative Medicines Initiative (IMI) is a public-private partnership aiming to speed up the development of better and safer medicines for patients." The location is Brussels, the website is imi.europa.eu, and it was joined in June 2010. There are 571 photos and videos. The page shows a pinned tweet from October 24: "Commissioner @Moedas gets the Sierra Leone #Ebola vaccine trial experience with an iris scan at #JUs4Innovation". The tweet includes a photo of Commissioner Carlos Moedas and others at a booth. Below the pinned tweet is another tweet from 38 minutes ago: "Next week we'll be at #BJOEUROPE in Berlin! Visit us at booth #111 and don't miss our SME session on Tue 7 Nov: bit.ly/2gOsDyS".



Gracias

Catherine Brett
catherine.brett@imi.europa.eu

www.imi.europa.eu

 @IMI_JU